

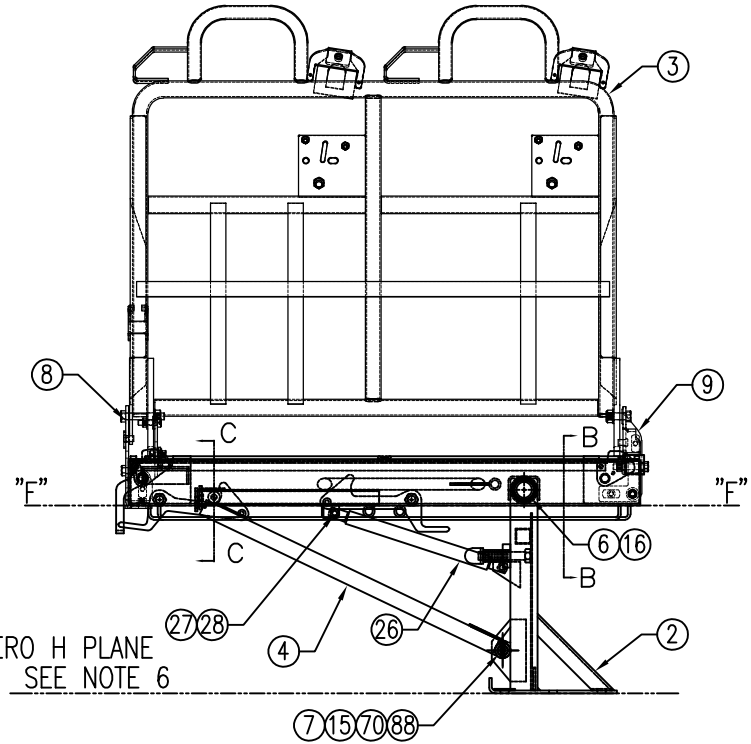
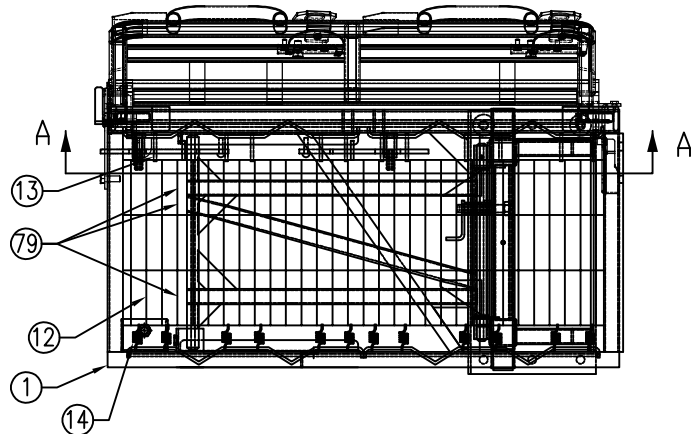




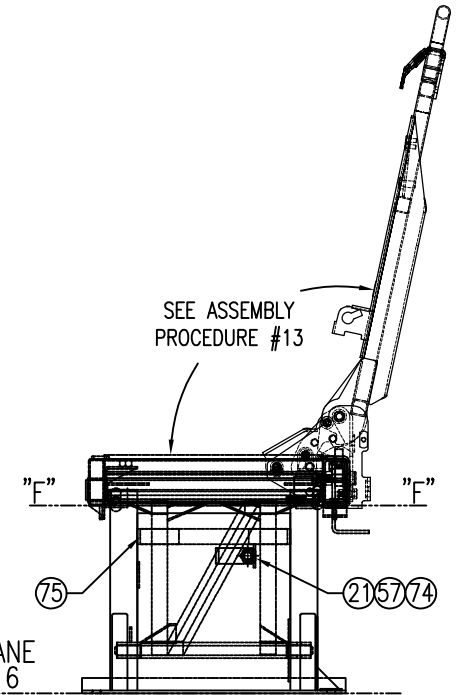
26501

NOT TO BE USED, DISCLOSED OR REPRODUCED WITHOUT PERMISSION.  
PROPERTY OF THE FREEDMAN SEATING COMPANY.

ASSY, 3PT FOLDAWAY, HI-BACK, 2PL, SS IS SHOWN



ZERO H PLANE  
SEE NOTE 6



ZERO H PLANE  
SEE NOTE 6

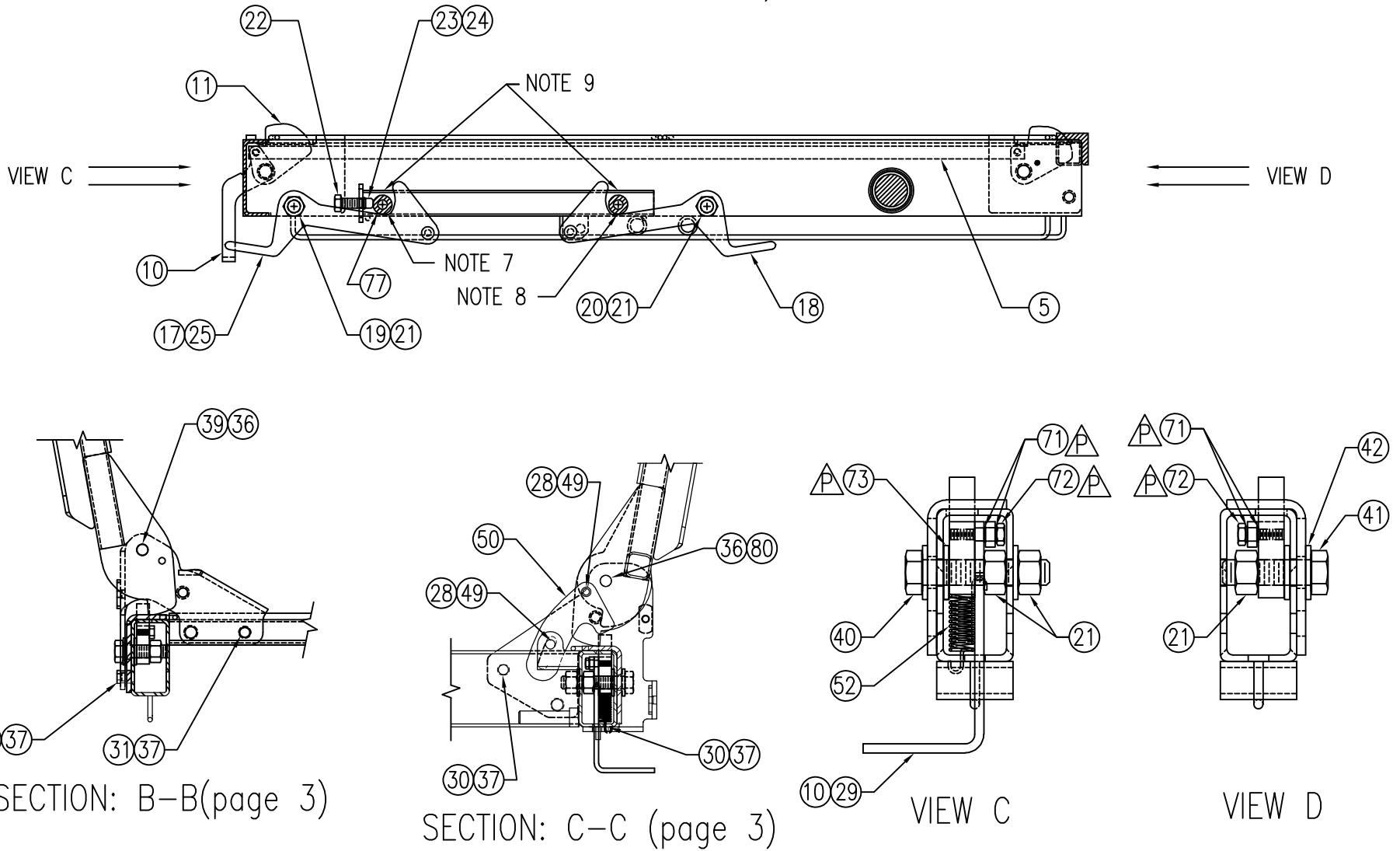
PAGE 3 OF 5

P	ADD 99063, 71728, 99015; UDPATE 120396 QTY	LH	2/19	7420																
N	ADDED QTY TO 99324	JL	8/18	7039																
M	REMOVE 70900	DN	11/14	4288	K	51126480 AND 51126474 WAS 28550;														
L	ADDED 52234590 TO BOM; 1001-186 WAS 26513					REPLACED 56603 WITH 27081 & 27082;														
	1000-186 WAS 26509; 1001-189 WAS 26547					REPLACED 56601 WITH 27079 & 27073	SC	11/11	2134											
	1000-189 WAS 26543	EAR	08/12	2622	J	(20 21/32) WAS 20 21/32; (10 1/32) WAS 10 1/32														
Rev. Level	Description of Change	By	Date	ECN #	Rev. Level	Description of Change	By	Date	ECN #											

Tolerances Unless  
Otherwise Specified  
FRACTION 1/X ±1/32"  
DECIMAL .XX ±0.02"  
.XXX ±0.005"  
ANGULAR ±1°

Material:	Freedman Seating Co.		4545 W. Augusta Blvd Chicago, IL 60651
Specifications:	Part Name ASSY, 3PT FOLDAWAY, HI-BACK, 2PL, SS		
Drawn by: RW	Date: 09/21/04	DO NOT SCALE DRAWING	Drawing No. 26501
			Rev. P

NOTE(S): 7) TRUSS RUNNER POSITION WHEN SEAT IS DEPLOYED.  
8) TRUSS RUNNER POSITION WHEN SEAT IS STOWED.  
9) CRIMP TRUSS SLIDER TO JUST TOUCH TRUSS RUNNER AT THESE 2 POSITIONS.



P	ADD 99063, 71728, 99015; UPDATE 120396 QTY	LH	2/19	7420
N	ADDED QTY TO 99324	JL	8/18	7039
M	REMOVE 70900	DN	11/14	4288
L	ADDED 52234590 TO BOM; 1001-186 WAS 26513			
	1000-186 WAS 26509; 1001-189 WAS 26547			
	1000-189 WAS 26543	EAR	08/12	2622
Rev. Level	Description of Change	By	Date	ECN #

		K			51126480 AND 51128474 WAS 26550;			
					REPLACED 56603 WITH 27081 & 27082;			
					REPLACED 56601 WITH 27079 & 27073	SC	11/11	2134
		J			(20 21/32) WAS 20 21/32; (10 1/32) WAS 10 1/32			
Rev. Level	Description of Change	By	Date	ECN #				

Material:		Tolerances Unless Otherwise Specified		FRACTION 1/X ±1/32"		Material:		Freedman Seating Co.		4545 W. Augusta Blvd Chicago, IL 60651	
Specifications:		DECIMAL .XX ±0.02"		.XXX ±0.005"		Part Name		ASSY, 3PT FOLDAWAY, HI-BACK, 2PL, SS		Rev. P	
Drawn by: RW		Date: 09/21/04		DO NOT SCALE DRAWING		Drawing No. 26501					

