
camira

style with substance

Defender Guide

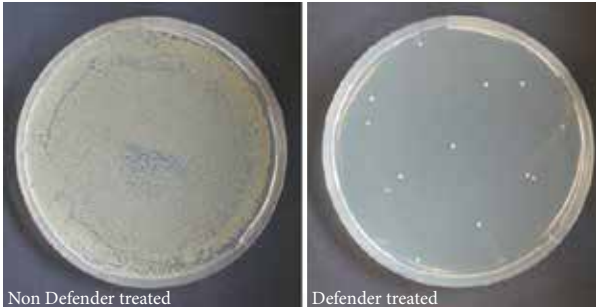
Protective armour for transport upholstery fabrics. Defender treatment wins the fight against spills, stains and germs.



Top/Right
Defender provides stain repellancy causing liquid spills to bead on the fabrics surface rather than soak in.



Bottom Right
Defender inhibits the growth of bacteria and fungus which thrive in warm conditions common to many transport interiors.



Camira Defender provides triple action long-lasting protection in a single fabric treatment, making it anti-bacterial, anti-fungal and anti-stain.

Drinks get spilt, people get sick, feet get put on seats. The result? Fabrics get messed up and germs get spread. Bad news not just for upholstery fabrics, but for the health and well-being of the travelling public. Defender treatment is added to woven fabrics forming an invisible protective shield around each individual fibre in the fabric structure, making fabrics look newer for longer and easier to care for. Anti-microbial properties can help stop the spread of infection by killing common bacteria and can also prevent the degradation of fabrics through mould.

1 Anti-bacterial:

Defender provides long-lasting durable freshness using anti-microbial silver technologies. Silver particles are highly effective anti-microbial agents in low concentrations with no human toxicity, protecting against bacteria such as *Staphylococcus aureus*, MRSA, *Salmonella Enteritidis* and *Salmonella Typhimurium*.

2 Anti-stain:

Defender provides superior protection against both water and oil based stains, making it effective against things like drinks, mud, even blood, as well as greasy food, fats and oil.

A new generation of textile finish system is used which builds a 3D microstructure on the surface of the textile. Its formulation contains precisely engineered microparticles which are the optimal dimension to replicate the "Lotus leaf effect", creating a unique coating giving superior repellent performance.

3 Anti-fungal:

Defender provides an effective control system against a variety of mould fungicides and mildews which can thrive in the warm, moist conditions in transport interiors, feeding on food and liquid spill remnants.

One of the most common is *Aspergillus niger*, which can spoil the textile appearance as it turns white-yellow then black. Rotting brings with it unpleasant odour problems and textile degradation leads to premature wear.

