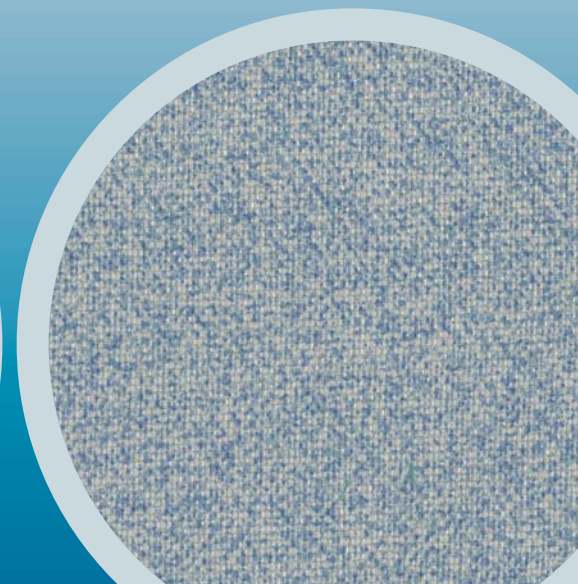
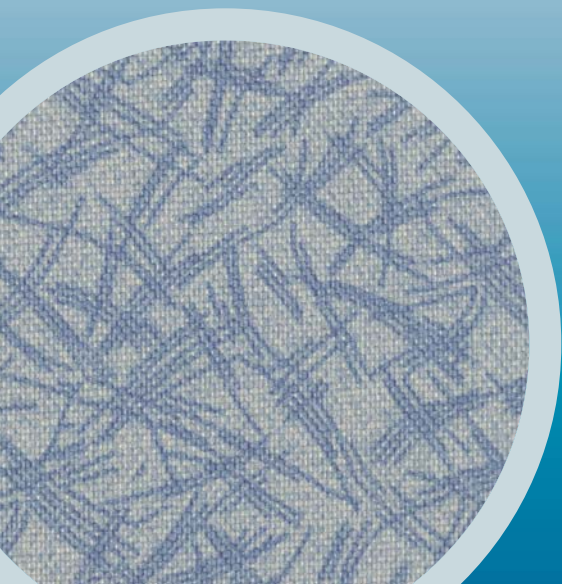




CMI Enterprises
5590 NW 163rd Street
Miami, FL 33014
1.800.426.4826
www.cmi-enterprises.com



Our Hi Tech-Hi Performance FXE fabrics provide you with cutting edge resistance and durability against today's elements. FXE is engineered to offer you a fast-drying and waterproof barrier – having passed several rigorous tests including hydrostatic pressure, rain resistance, and spray repellency. When it comes to stain resistance, our FXE fabrics set the industries benchmark. Most spills can easily be cleaned up with ordinary household detergents and water.

FXE can remain spotless even when dirt and mud begin to fly. Concerned about mildew, bacteria and fungus growth? Relax, FXE inhibits their propagation and the unacceptable elements of rot and unpleasant odors that inevitably follow.

FXE fabrics are also in-tune with today's weather elements. They respond slowly to dropping temperatures, retaining heat and remaining warmer longer – while keeping cool when everything else is getting hot. Keeping everyone comfortable in FXE seating regardless of the weather elements outside is what we do...and we do it well.

Combining Form, Fashion and Functionality is what FXE fabrics is all about. Whatever your interior design wishes are - we are confident we can provide the solution to satisfy them.

You name it - we've tested FXE on it. High performance abrasion, puncture and flammability tests have been applied and FXE came out with flying colors – which offers you and your customers both strength and toughness.

CMI and FXE a company and fabric committed to meeting and satisfying all your interior seating needs.

FXE with anti-microbial Transit Fabric Certification Data Sheet

Test	Method	Units	Results
Fiber			100% Polyester
Width		in.	59
Weight	SAE J860	oz/sq. yd.	10.8
Tensile Strength	ASTM D5034	lbs.	
Warp			265
Fill			226
Tear Strength	ASTMD1117	lbs.	
Warp			67.6
Fill			49.8
Seam Strength	463KB-13-01	lbs.	
Warp			116
Fill			102
Wyzenbeek	ASTM D4157-02	dbl rubs	100,000+
UV Resistance	SAE J1885 225 KJ	pass/fail	pass
Flammability	FMVSS 302	in/min	pass
Regular Version			
Docket 90 Version	FAR 25.853 ASTM E-662	in/min emissions	pass pass
Crocking	AATCC 8	grade	
Wet			4.5 pass
Dry			4.5 pass
Water Repellency	AATCC-22-1996	grade	100
Spray test			
Water Resistance	AATCC 127-1998	mbars	125
Hydrostatic pressure			mbars
Anti-microbial	JIS L1902	grade	pass

